

# *Wurzelstift- Aufbausysteme*

## *Root Post Restoration Systems*

### *Systèmes de restauration radiculaire*

HeadMaster konischer Kopf, passiv

7.18, 7.19



HeadMaster tapered head, passive

HeadMaster tête conique, passif

HeadMaster konischer Kopf, aktiv

7.20, 7.21



HeadMaster tapered head, active

HeadMaster tête conique, actif

HeadMaster zylindrischer Kopf, passiv

7.22, 7.23



HeadMaster cylindrical head, passive

HeadMaster tête cylindrique, passif

HeadMaster zylindrischer Kopf, aktiv

7.24, 7.25



HeadMaster cylindrical head, active

HeadMaster tête cylindrique, actif

PinMaster, aktiv

7.26



PinMaster, active

PinMaster, actif

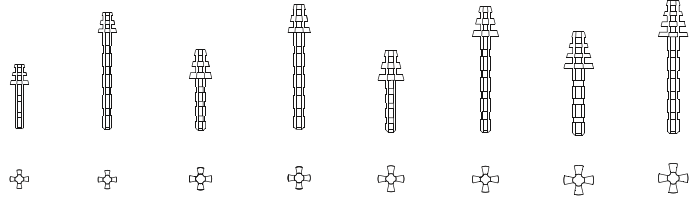
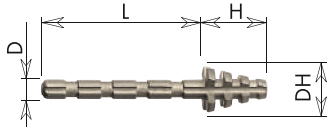
PostMaster, passiv

7.27



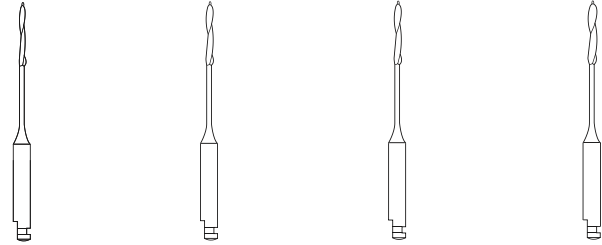
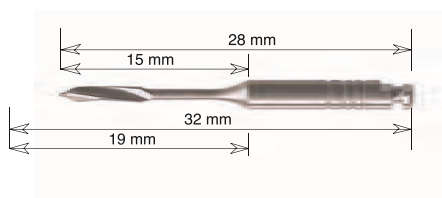
PostMaster, passive

PostMaster, passif

**HeadMaster konischer Kopf, passiv • HeadMaster tapered head, passive • HeadMaster tête conique, passif**

**TITAN • TITANIUM (Ti6Al4V)**

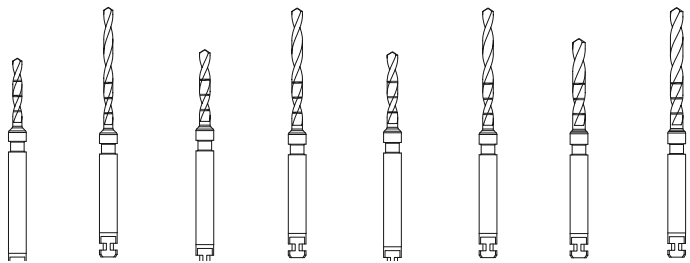
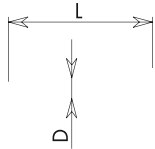
Farbkodierung/Größe * Colour Code/Size * Code couleur /taille		1		2		3		4	
Stiftschaft ø • Post Shank dia. • Tige ø	D mm	1.15		1.35		1.35		1.6	
Stiftschaftlänge • L. of Post Shank • Longueur	L mm	6	13	7	13	7	13	9	13
Kopf ø • Head dia. • Tête ø	DH mm	2.5	2.5	3	3	3.5	3.5	4	4
Kopfhöhe • Head Length • Longueur de la tête	H mm	2.75	2.75	3.85	3.85	4.0	4.0	4.9	4.9

Nachfüllpackung • Refill • Recharge	W6310	W6311	W6312	W6313	W6314	W6315	W6316	W6317
Sortiment • Assortment • Assortiment	W6302	W6303	W6304	W6305	W6306	W6307	W6308	W6309
10 Titan Gewindestift, 1 Peeso, 1 Vorbohrer, 1 Planfräser, 1 Steckschlüssel • 10 Titanium Posts, 1 Peeso, 1 Drill, 1 Root Facer, 1 Socket Wrench • 10 Tenons en titane, 1 Peeso, 1 foret, 1 fraise à surfer, 1 clé pour ancrage								


**Peeso**

Schaftkodierung/Ringe*Shank marks/rings*Codification de tiges/bagues		2		3		3		4	
ISO 330 204 682 336 ...	183.15. ...	090	110	110	110	110	130	130	
ISO 330 205 682 336 ...	183.19. ...	090	110	110	110	110	130	130	

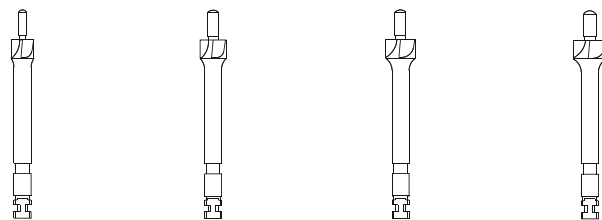
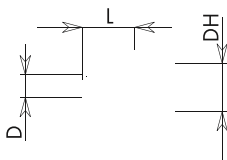
opt. 800 - 1.000 rpm


**Vorbohrer • Drill • Foret**

Farbkodierung/Größe * Colour Code/Size * Code couleur /taille		1		2		3		4	
Bohrer ø • Drill dia. • Foret ø	D mm	1.2		1.4		1.4		1.65	
Bohrerlänge • Length of Drill • L. à foret	L mm	9	16	10	16	10	16	12	16

W6320 W6321 W6322 W6323 W6324 W6325 W6326 W6327

opt. 500 - 1.000 rpm


**Planfräser • Root Facer • Fraise à surfer**

Farbkodierung/Größe * Colour Code/Size * Code couleur /taille		1		2		3		4	
Zapfen ø • Guide Pin dia. • Pivot ø	D mm	1.1		1.3		1.3		1.55	
Zapfenl. • Length of Pin • Longueur du pivot	L mm	4.0		4.0		4.0		4.0	
Kopf ø • Head dia. • Tête ø	DH mm	3.0		3.5		4.0		4.5	

W6330	W6331	W6332	W6333
-------	-------	-------	-------

opt. 1000 - 1.500 rpm

**HeadMaster konischer Kopf, passiv • HeadMaster tapered head, passive • HeadMaster tête conique, passif**

**Steckschlüssel • Socket Wrench • Clé pour ancrage**

Farbkodierung/Größe \* Colour Code/Size \* Code couleur /taille

1	2	3	4
W6350	W6351	W6352	W6353

1 REF

**REF W6300** Inhalt/Contents/Contenu: W6302, W6304, W6306, W6308 • Sortiment groß/ Economy Assortment/ Grand assortment

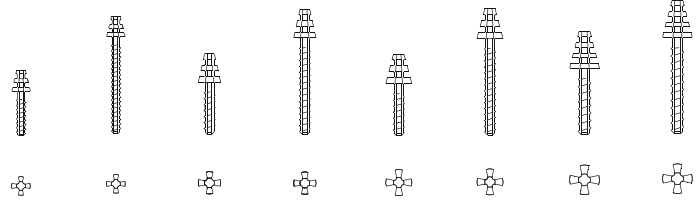
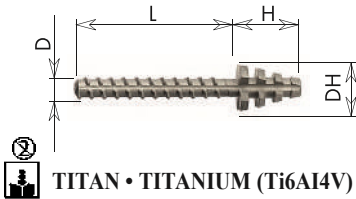


**REF W6301** Inhalt/Contents/Contenu: W6303, W6305, W6307, W6309 • Sortiment groß/ Economy Assortment/ Grand assortment



**Sortimente : je 10 Stifte • Assortments: 10 of each Posts**  
**Assortiments: par 10 tenons**

**HeadMaster konischer Kopf, aktiv • HeadMaster tapered head, active • HeadMaster tête conique, actif**

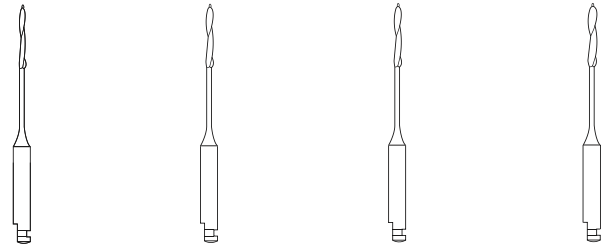
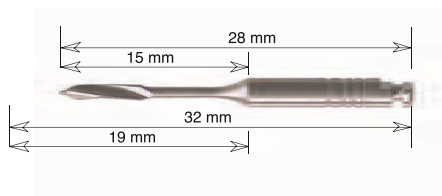


**TITAN • TITANIUM (Ti6Al4V)**

Farbkodierung/Größe * Colour Code/Size * Code couleur /taille		1		2		3		4	
Stiftschaft ø • Post Shank dia. • Tige ø	D mm	1.3		1.5		1.5		1.75	
Stiftschaftl. • L. of Post Shank • Longueur	L mm	6	13	7	13	7	13	9	13
Kopf ø • Head dia. • Tête ø	DH mm	2.5	2.5	3	3	3.5	3.5	4	4
Kopfhöhe • Head Length • Longueur de la tête	H mm	2.75	2.75	3.85	3.85	4.0	4.0	4.9	4.9

<b>REF</b> Nachfüllpackung • Refill • Recharge	W6210	W6211	W6212	W6213	W6214	W6215	W6216	W6217
<b>REF</b> Sortiment • Assortment • Assortiment	W6202	W6203	W6204	W6205	W6206	W6207	W6208	W6209

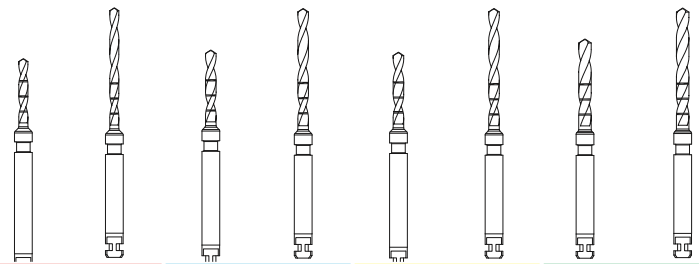
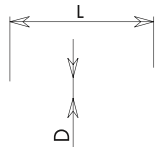
10 Titan Gewindestift, 1 Peeso, 1 Vorbohrer, 1 Planfräser, 1 Steckschlüssel • 10 Titanium Posts, 1 Peeso, 1 Drill, 1 Root Facer, 1 Socket Wrench • 10 Tenons en titane, 1 Peeso, 1 foret, 1 Fraise à surfer, 1 clé pour ancrage



**Peeso**

Schaftkodierung/Ringe* Shank marks/rings* Codification de tiges/bagues		2		3		3		4	
ISO 330 204 682 336 ...	<b>REF</b> 183.15. ...	090		110		110		130	
ISO 330 205 682 336 ...	<b>REF</b> 183.19. ...	090		110		110		130	

opt. 800 - 1.200 rpm

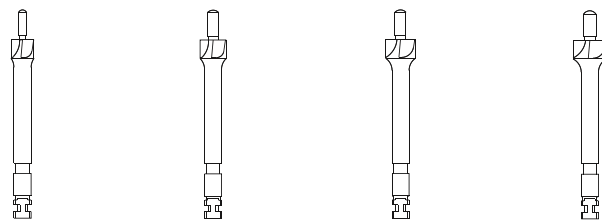
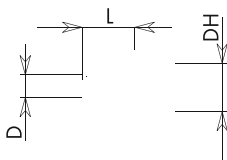


**Vorbohrer • Drill • Foret**

Farbkodierung/Größe * Colour Code/Size * Code couleur /taille		1		2		3		4	
Bohrer ø • Drill dia. • Foret ø	D mm	1.2		1.4		1.4		1.65	
Bohrerlänge • Length of Drill • L. à foret	L mm	9	16	10	16	10	16	12	16

<b>REF</b>	W6320	W6321	W6322	W6323	W6324	W6325	W6326	W6327
------------	-------	-------	-------	-------	-------	-------	-------	-------

opt. 500 - 1.000 rpm



**Planfräser • Root Facer • Fraise à surfer**

Farbkodierung/Größe * Colour Code/Size * Code couleur /taille		1		2		3		4	
Zapfen ø • Guide Pin dia. • Pivot ø	D mm	1.1		1.3		1.3		1.55	
Zapfenl. • Length of Pin • Longueur du pivot	L mm	4.0		4.0		4.0		4.0	
Kopf ø • Head dia. • Tête ø	DH mm	3.0		3.5		4.0		4.5	

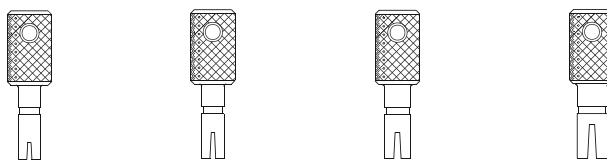
<b>REF</b>	W6330	W6331	W6332	W6333
------------	-------	-------	-------	-------

opt. 1.000 - 1.500 rpm

**HeadMaster konischer Kopf, aktiv • HeadMaster tapered head, active • HeadMaster tête conique, actif**



**Steckschlüssel • Socket Wrench • Clé pour ancrage**



Farbkodierung/Größe \* Colour Code/Size \* Code couleur /taille

1	2	3	4
W6350	W6351	W6352	W6353



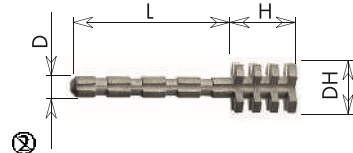
**REF W6200** Inhalt/Contents/Contenu: W6202, W6204, W6206, W6208 • Sortiment groß/ Economy Assortment/ Grand assortiment



**REF W6201** Inhalt/Contents/Contenu: W6203, W6205, W6207, W6209 • Sortiment groß/ Economy Assortment/ Grand assortiment



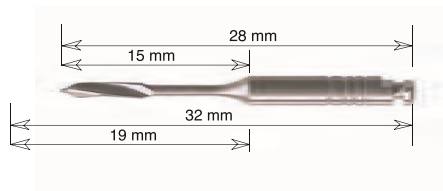
**Sortimente :** je 10 Stifte • **Assortiments:** 10 of each Posts  
**Assortiments:** par 10 tenons

**HeadMaster zylindrischer Kopf, passiv • HeadMaster cylindrical head, passive • HeadMaster tête cylindrique, passif**

**TITAN • TITANIUM (Ti6Al4V)**

Farbkodierung/Größe * Colour Code/Size * Code couleur /taille		1		2		3		4	
Stiftschaft ø • Post Shank dia. • Tige ø	D mm	1.15		1.35		1.35		1.6	
Stiftschaftl. • L. of Post Shank • Longueur	L mm	6	13	7	13	7	13	9	13
ГОЛОВКА ø • Head dia. • Tête ø	DH mm	2.5	2.5	3	3	3.5	3.5	4	4
Kopfhöhe • Head Length • Longueur de la tête	H mm	2.75	2.75	3.85	3.85	4.0	4.0	4.9	4.9

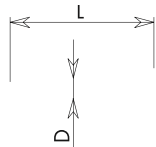
REF Nachfüllpackung • Refill • Recharge	W6510	W6511	W6512	W6513	W6514	W6515	W6516	W6517
REF Sortiment • Assortment • Assortiment	W6502	W6503	W6504	W6505	W6506	W6507	W6508	W6509

10 Titan Gewindestift, 1 Peeso, 1 Vorbohrer, 1 Planfräser, 1 Steckschlüssel • 10 Titanium Posts, 1 Peeso, 1 Drill, 1 Root Facer, 1 Socket Wrench • 10 Tenons en titane, 1 Peeso, 1 foret, 1 Fraise à surfer, 1 clé pour ancrage


**Peeso**

Schaftkodierung/Ringe*Shank marks/rings*Codification de tiges/bagues	2	3	3	4
ISO 330 204 682 336 ...	090	110	110	130
ISO 330 205 682 336 ...	090	110	110	130

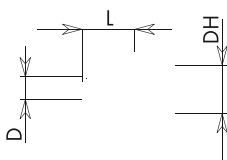
max. 800 - 1.200 rpm


**Vorbohrer • Drill • Foret**

Farbkodierung/Größe * Colour Code/Size * Code couleur /taille		1		2		3		4	
Bohrer ø • Drill dia. • Foret ø	D mm	1.2		1.4		1.4		1.65	
Bohrerlänge • Length of Drill • L. du foret	L mm	9	16	10	16	10	16	12	16

REF	W6320	W6321	W6322	W6323	W6324	W6325	W6326	W6327
-----	-------	-------	-------	-------	-------	-------	-------	-------

opt. 500 - 1.000 rpm

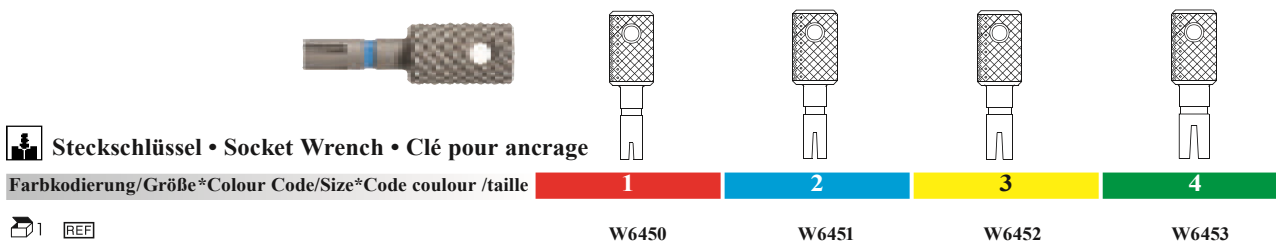

**Planfräser • Root Facer • Fraise à surfer**

Farbkodierung/Größe * Colour Code/Size * Code couleur /taille		1		2		3		4	
Zapfen ø • Guide Pin dia. • Pivot ø	D mm	1.1		1.3		1.3		1.55	
Zapfenl. • Length of Pin • Longueur du pivot	L mm	4.0		4.0		4.0		4.0	
Kopf ø • Head dia. • Tête ø	DH mm	3.0		3.5		4.0		4.5	

REF	W6330	W6331	W6332	W6333
-----	-------	-------	-------	-------

opt. 1.000 - 1.500 rpm

HeadMaster zylindrischer Kopf, passiv • HeadMaster cylindrical head, passive • HeadMaster tête cylindrique, passif



Steckschlüssel • Socket Wrench • Clé pour ancrage

Farbkodierung/Größe\*Colour Code/Size\*Code couleur /taille

1	2	3	4
W6450	W6451	W6452	W6453

REF

REF **W6500** Inhalt/Contents/Contenu: W6502, W6504, W6506, W6508 • Sortiment groß/ Economy Assortment/ Grand assortiment

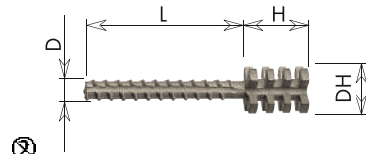
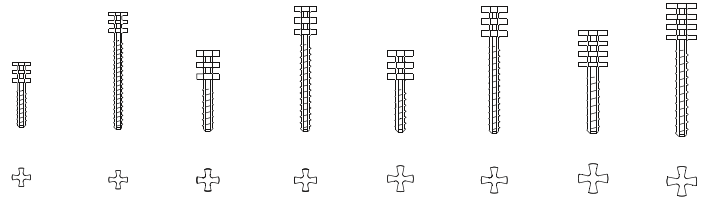


REF **W6501** Inhalt/Contents/Contenu: W6503, W6505, W6507, W6509 • Sortiment groß/ Economy Assortment/ Grand assortiment

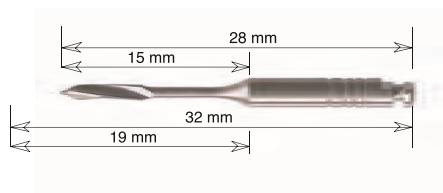
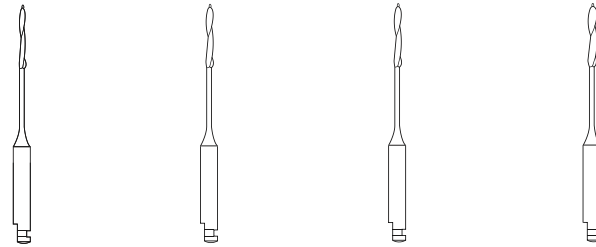


Sortimente : je 10 Stifte • Assortiments: 10 of each Posts  
Assortiments: par 10 tenons

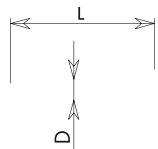
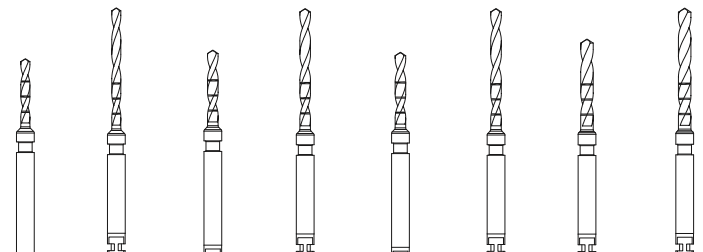
Praxis • Dental Surgery • Cabinet dentaire

**HeadMaster zylindrischer Kopf, aktiv • HeadMaster cylindrical head, active • HeadMaster tête cylindrique, actif**

**TITAN • TITANIUM (Ti6Al4V)**


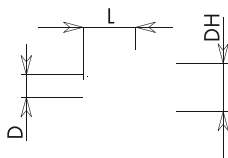
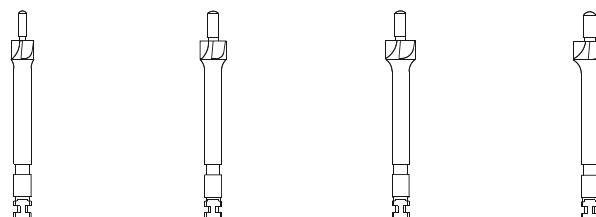
Farbkodierung/Größe * Colour Code/Size * Code couleur /taille		1	2	3	4				
Stiftschaft ø • Post Shank dia. • Tige ø	D mm	1.3	1.5	1.5	1.75				
Stiftschaftl. • L. of Post Shank • Longueur	L mm	6 13	7 13	7 13	9 13				
Kopf ø • Head dia. • Tête ø	DH mm	2.5 2.5	3 3	3.5 3.5	4 4				
Kopfhöhe • Head Length • Longueur de la tête	H mm	2.75 2.75	3.85 3.85	4.0 4.0	4.9 4.9				
<b>Nachfüllpackung • Refill • Recharge</b>		W6410	W6411	W6412	W6413	W6414	W6415	W6416	W6417
<b>Sortiment • Assortment • Assortiment</b>		W6402	W6403	W6404	W6405	W6406	W6407	W6408	W6409
10 Titan Gewindestift, 1 Peeso, 1 Vorbohrer, 1 Planfräser, 1 Steckschlüssel • 10 Titanium Posts, 1 Peeso, 1 Drill, 1 Root Facer, 1 Socket Wrench • 10 Tenons en titane, 1 Peeso, 1 foret, 1 Fraise à surfer, 1 clé pour ancrage									


**Peeso**


Schafkennung/Ringe*Shank marks/rings*Codification de tiges/bagues		2	3	3	4
ISO 330 204 682 336 ...	183.15. ...	090	110	110	130
ISO 330 205 682 336 ...	183.19. ...	090	110	110	130
⊖ opt. 800 - 1.200 rpm					


**Vorbohrer • Drill • Foret**


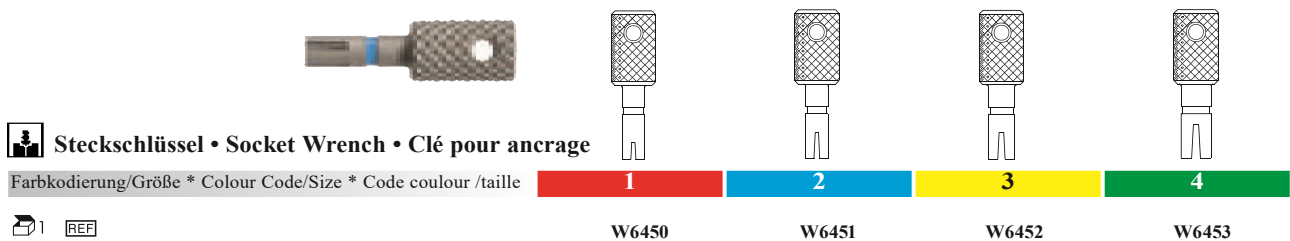
Farbkodierung/Größe * Colour Code/Size * Code couleur /taille		1	2	3	4				
Bohrer ø • Drill dia. • Foret ø	D mm	1.2	1.4	1.4	1.65				
Bohrerlänge • Length of Drill • L. du foret	L mm	9 16	10 16	10 16	12 16				
		W6320	W6321	W6322	W6323	W6324	W6325	W6326	W6327
⊖ opt. 500 - 1.000 rpm									


**Planfräser • Root Facer • Fraise à surfer**


Farbkodierung/Größe * Colour Code/Size * Code couleur /taille		1	2	3	4
Zapfen ø • Guide Pin dia. • Pivot ø	D mm	1.1	1.3	1.3	1.55
Zapfenl. • Length of Pin • Longueur du pivot	L mm	4.0	4.0	4.0	4.0
Kopf ø • Head dia. • Tête ø	DH mm	3.0	3.5	4.0	4.5
		W6330	W6331	W6332	W6333
⊖ opt. 1.000 - 1.500 rpm					



HeadMaster zylindrischer Kopf, aktiv • HeadMaster cylindrical head, active • HeadMaster tête cylindrique, actif



REF W6400 Inhalt/Contents/Contenu: W6402, W6404, W6406, W6408 • Sortiment groß/ Economy Assortment/ Grand assortment



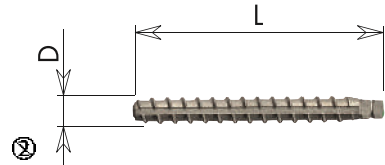
REF W6401 Inhalt/Contents/Contenu: W6403, W6405, W6407, W6409 • Sortiment groß/ Economy Assortment/ Grand assortment






Sortimente : je 10 Stifte • Assortments: 10 of each Posts  
Assortiments: par 10 tenons

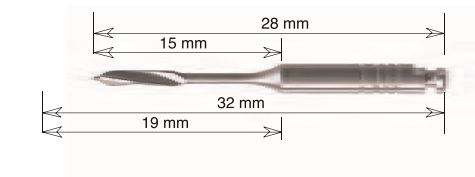
Praxis • Dental Surgery • Cabinet dentaire

## PinMaster, aktiv • PinMaster, active • PinMaster, actif







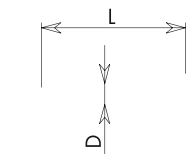
### TITAN • TITANIUM (Ti6Al4V)

Farbkodierung/Größe * Colour Code/Size * Code couleur /taille		1		2		4	
Stiftschaft ø • Post Shank dia. • Tige ø	D mm	1.3		1.5		1.75	
Stiftschäftl. • L. of Post Shank • Longueur	L mm	8.75	16.5	10.85	16.5	13.9	16.5
 10  Nachfüllpackung • Refill • Recharge		W6110	W6111	W6112	W6113	W6114	W6115
 Sortiment • Assortment • Assortiment		W6102	W6103	W6104	W6105	W6106	W6107
10 Titan Gewindestift, 1 Peeso, 1 Vorbohrer, 1 Steckschlüssel • 10 Titanium Posts, 1 Peeso, 1 Drill, 1 Socket Wrench • 10 Tenons en titane, 1 Peeso, 1 foret, 1 clé pour ancrage							





### Peeso

Schafthkodierung/Ringe* Shank marks/rings* Codification de tiges/bagues		2		3		4	
ISO 330 204 682 336 ...	 6  183.15. ...	090		110		130	
ISO 330 205 682 336 ...	 6  183.19. ...	090		110		130	
⌀ opt. 800 - 1.200 rpm							



### Vorbohrer • Drill • Foret

Farbkodierung/Größe * Colour Code/Size * Code couleur /taille		1		2		4	
Bohrer ø • Drill dia. • Foret ø	D mm	1.2		1.4		1.65	
Bohrerlänge • Length of Drill • L. à foret	L mm	9	16	10	16	12	16
 3 		W6320	W6321	W6322	W6323	W6326	W6327
⌀ opt. 500 - 1.000 rpm							

### Steckschlüssel • Socket Wrench

Farbkodierung/Größe * Colour Code/Size * Code couleur /taille		1		2		4	
 1 		W6150		W6151		W6152	



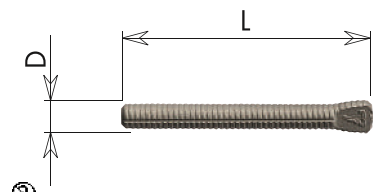
#### REF W6101

Inhalt/Contents/Contenu:  
W6103, W6105, W6107  
lange Stifte, *long posts*,  
*Tenons longue*





#### REF W6100

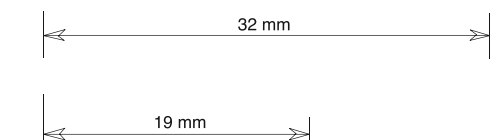
Inhalt/Contents/Contenu:  
W6102, W6104, W6106  
kurze Stifte, *short posts*,  
*Tenons courte*

## PostMaster, passiv • PostMaster, passive • PostMaster, passif





### TITAN • TITANIUM (Ti6Al4V)

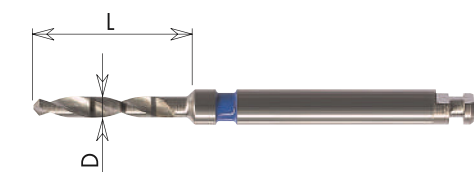
Farbkodierung/Größe*Colour Code/Size*Code couleur /taille		3	4	5	6	7
Stiftschaft ø • Post Shank dia. • Tige ø	D mm	0.9	1.0	1.25	1.5	1.75
Stiftschaftl. • L. of Post Shank • Longueur	L mm	19	19	19	19	19
 10  Nachfüllpackung • Refill • Recharge		W6010	W6011	W6012	W6013	W6014
 Sortiment • Assortment • Assortiment		W6002	W6003	W6004	W6005	W6006
10 Titan Gewindestift, 1 Peeso, 1 Vorbohrer • 10 Titanium Posts, 1 Peeso, 1 Drill • 10 Tenons en titane, 1 Peeso, 1 foret						
 Sortiment • Assortment • Assortiment		W6002L	W6003L	W6004L	W6005L	W6006L
10 Titan Gewindestift, 1 Peeso, 1 Vorbohrer lang • 10 Titanium Posts, 1 Peeso, 1 Drill long • 10 Tenons en titane, 1 Peeso, 1 foret long						





### Peeso

Schaftkodierung/Ringe*Shank marks/rings*Codification de tiges/bagues		1	2	3	4	5
ISO 330 205 682 336 ...   183.19. ...		070	090	110	130	150

⊖ opt. 800 - 1.200 rpm



### Vorbohrer • Drill • Foret

Farbkodierung/Größe*Colour Code/Size * Code couleur /taille		3	4	5	6	7					
Bohrer ø • Drill dia. • Foret ø	D mm	0.95	1.05	1.30	1.55	1.80					
Bohrerlänge • Length of Drill • L. du foret	L mm	16	16	16	16	16					
 3 		W6020	W6021	W6022	W6023	W6024	W6025	W6026	W6027	W6028	W6029

⊖ opt. 500 - 1.000 rpm